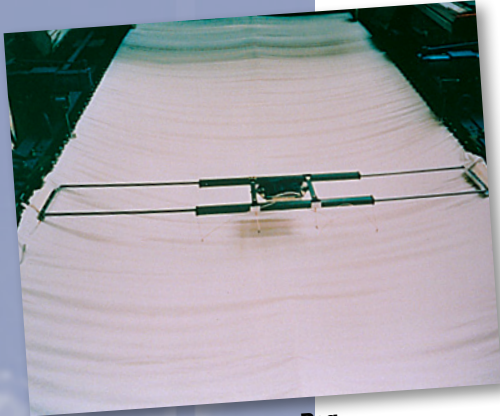


StenterPaq

the Stenter Oven profiling solution

The Datapaq® StenterPaq allows you to monitor the temperature profile of your fabric as it passes through the Stenter / Tenter oven. It combines the latest data logger technology, with thermal protection and analytical software to ensure your process is kept within specified tolerances.



Telescopic Frame StenterPaq

The StenterPaq is designed to be either supported by the fabric or by the stenter hooks, with only the thermocouple tips touching the fabric.

The StenterPaq can be used on a wide range of material from smooth fabric through to heavy, deep pile carpet.

Two types of the StenterPaq are available for use in the stenter. A telescopic arm frame, is used for processes where the fabric stretches as it enters the stenter. A fixed arm type is used in Stenters where a mesh belt supports the fabric, or for use in the carpet industry.

Precise temperature readings begin immediately when the thermocouples enter the Stenter and are taken at high speed for the best possible resolution.

Upon exit, the data is downloaded onto the Datapaq powerful, yet easy to use Insight™ analysis software package, allowing fast and accurate analysis of the drying or curing cycle, with full color reports generated in seconds.

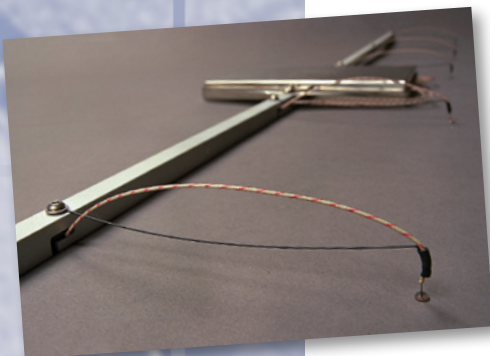
SYSTEM FEATURES

- Data logger accuracy of $\pm 0.5^{\circ}\text{C}$ ($\pm 0.9^{\circ}\text{F}$)
- Powerful Datapaq Insight™ analysis software
- Fast response thermocouples with special flat tips do not mark or penetrate even the finest of fabrics
- Range of arm sizes to suit all fabric widths
- Sampling interval fully programmable down to 0.05 seconds
- Repeatable results
- Starts automatically on entering the oven by temperature



BENEFITS

- Designed to meet the specific needs of the textile industry
- Generates automatic process reports for ISO9001
- Checks that the cure is to the manufacturer's specification
- Allows fast set-up after line maintenance, breakdown or fabric type change
- Ensures true oven conditions are always monitored – the line only needs to be stopped for a few seconds to fit the system
- Highlights hot and cold spots in the oven which may give a 'patchy' finish on the fabric
- Optimizes production by reducing rejects and increasing quality
- Easy-to-use!



Fixed arm on StenterPaq

TECHNICAL SPECIFICATIONS

Q18 DATA LOGGER

Model:	DQ1860
Number of Channels:	6
Sample Interval:	0.05 seconds to 10 minutes
Accuracy:	±0.5°C (±0.9°F)
Resolution:	0.1°C (0.2°F)
Maximum Internal Operating Temperature:	85°C (185°F)
Temperature Range:	-200°C to 1370°C (-328°F to 2498°F)
Memory:	18,000 readings per channel
Data Collection Start:	Start/Stop buttons, time or temperature trigger
Thermocouples:	Type K
Battery:	NiMH rechargeable
Battery Charging:	Full charge in less than 2 hours
Battery Life:	60 hours (sample interval 5 seconds @ 25°C / 77°F)

TECHNICAL SPECIFICATIONS

TB0030 – Fixed Arm Thermal Barrier

Width (overall):	1000 mm (39.3 in), 1300 mm (51.1 in), 1750 mm (68.8 in) (please specify)
Depth (overall):	202 mm (7.9 in)
Height (overall):	20 mm (0.78 in)
Weight:	1.4 kg (3 lbs)
Duration:	4 minutes @ 250°C (482°F), 5.5 minutes @ 150°C (302°F)

TB0031 – Telescopic Arm Thermal Barrier

Width (overall):	Adjustable from 700 mm to 1840 mm (27.5 in to 72.4 in)
Depth (overall):	320 mm (12.5 in)
Height (overall):	33 mm (1.2 in)
Weight:	3 kg (6.6 lbs)
Duration:	4 minutes @ 250°C (482°F), 5.5 minutes @ 150°C (302°F)

THERMOCOUPLES

Spring Arm Stenter Thermocouple

- Exposed junction tip
- PTFE 0°C to 265°C (32°F to 509°F)
- Used for fabric or carpet with deep pile to penetrate to base of material

Spring Arm Stenter Thermocouple

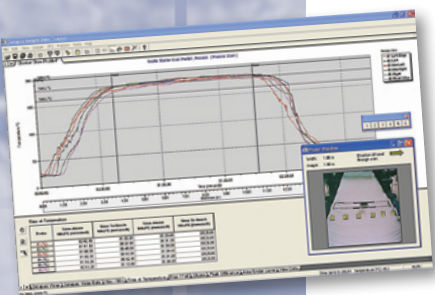
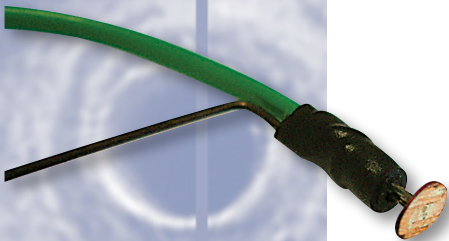
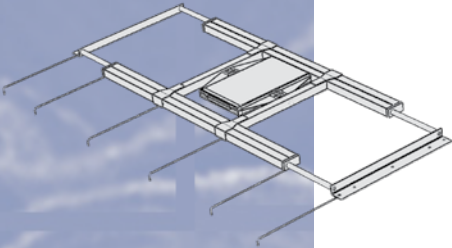
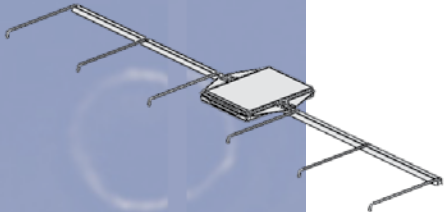
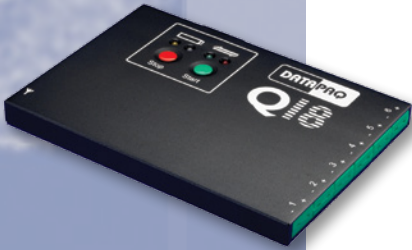
- Copper washer tip
- PTFE 0°C to 265°C (32°F to 509°F)
- Used for smooth fabric to sit flat on the surface

SOFTWARE FEATURES

Oven Tracker® Insight™ analysis software allows comprehensive data review, analysis and reporting.

Includes:

- Simple Wizard operation
- Datapaq Value, Reference and Tolerance Curves, SPC (Statistical Process Control), BakeChart analysis
- Analysis Alarms, plus much more
- Local language available (please contact Datapaq for details)



Fluke Process Instruments

EMEA

Cambridge, UK
Tel: +44 1223 652 400
sales@flukeprocessinstruments.co.uk

Americas

Derry, NH USA
Tel: +1 603 537 2680
sales@flukeprocessinstruments.com

China

Beijing, China
Tel: +86 10 6438 4691
sales@flukeprocessinstruments.com.cn

Asia East and South

India Tel: +91 22 2920 7691
Singapore Tel: +65 6799 5596
sales.asia@flukeprocessinstruments.com

Worldwide Service

Fluke Process Instruments offers services, including repair and calibration. For more information, contact your local office.

www.flukeprocessinstruments.com

© 2016 Fluke Process Instruments
Specifications subject to change without notice.
11/2016 StenterPaq RevB

