

DENTCloud

Your Data, Anywhere, Subscription-Free

DENTCloud offers unparalleled accessibility to your energy data anywhere in the world. This intuitive platform provides real-time visibility into all your power consumption data points and the flexibility to create dynamic plots and dashboards that meet your unique monitoring needs.

API Access

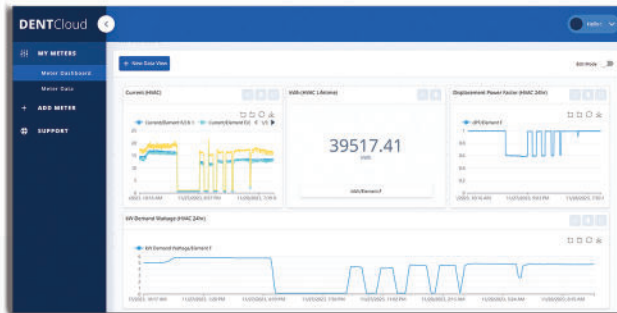
DENTCloud is now accessible through a private API, allowing you to integrate your meter's data directly with any endpoint. Developers can self-manage with easy-to-use API key creation and management tools.

No Subscription!!

DENTCloud operates on a non-subscription, open-standard basis, ensuring you have full access to your data without recurring fees. Enjoy the freedom to choose your own solutions without being locked into a specific product family.

User-Friendly Interface

DENTCloud lets you visualize data directly through customizable widgets and dashboards. Create real-time views of data points, graphs, and trends effortlessly to gain the insights that matter most to you.



WHAT'S NEW IN v1.2:

- Enhanced filtering and sorting
- Custom naming and location of meters
- Local time data handling
- Flexible widgets
- Improved layouts for tabular data views
- Real-time synchronization

DENTCLOUD FEATURES:

- Dynamic and scalable database
- No data storage limits
- Real-time access (*voltage, current, power, and more*)
- Highly accurate, revenue-grade data
- Customizable data visualization
- Accessible from any web browser
- Manage multiple meters in a single account
- Share meter data between multiple accounts

APPLICATIONS:

- Tenant Submetering and Billing
- Compliance and Certifications
- Real-time Monitoring of Energy and Carbon Goals
- Measurement & Verification Projects